



The Potential of Magnesium-Based Materials for Engineering and Biomedical Applications

Sankaranarayanan Seetharaman^{1*} , S. Jayalakshmi², R. Arvind Singh² and Manoj Gupta¹

Abstract | Magnesium (Mg) is the lightest structural metal available in abundance on earth crust. It is an excellent candidate for weight critical applications. For example, the replacement of currently used aluminium alloys in transportation sector by magnesium materials would promote fuel energy savings and emission control. In recent years, there is a growing interest on the utilization of Mg materials for biomedical applications. This is primarily due to the bioresorbable and nontoxic nature of Mg which makes it an ideal choice for body implants. This paper therefore deliberates on the properties of Mg-based materials for potential use in various engineering and biomedical applications. The development of Mg-alloys and composites are discussed in detail, highlighting the influence of various alloying elements and reinforcements. The processing methods applicable for Mg materials are briefly introduced, followed by a summary on the current trends and the actual use of Mg-based materials in automobile, aerospace, consumer electronics, and biomedical applications.

Keywords: Magnesium, Magnesium alloys, Magnesium composites, Applications, Engineering, Biomedical

1 Introduction

Magnesium is the eight most abundant element (~2.5%) in earth's crust. Combined with its excellent recycling potential, Mg becomes an ideal candidate for sustainable applications. In natural state, Mg exists as carbonate in magnesite (MgCO_3), dolomite ($\text{MgCO}_3 \cdot \text{CaCO}_3$), hydroxide in brucite $\text{Mg}(\text{OH})_2$, chloride in carnallite $\text{KCl} \cdot \text{MgCl}_2 \cdot 6(\text{H}_2\text{O})$, and sulphate in kieserite $\text{MgSO}_4 \cdot \text{H}_2\text{O}$. Given the abundant availability of Mg as dissolved chlorides in sea water (0.13%), the industrial production of Mg was achieved through the **electrolysis** of molten MgCl_2 . Today, the commercial production of Mg also involves thermal reduction of mineral ore through the Pidgeon process^{1,2}.

With a density of ~1.74 g/cc, i.e., ~35% lighter than Al and ~75% lighter than steel, Mg exhibits comparable properties as aluminium, as shown in Table 1. Other salient properties of Mg include excellent castability, machinability, **damping**

capacity, heat dissipation, and **electromagnetic shielding** characteristics³. Being the most reactive of all structural metals, it reacts strongly with oxygen and ignites easily in dry air when present in powdered form. The high reactivity of Mg together with its weight saving attribute was exploited in the past for making explosives, **pyrotechnic devices**, and rocket propellants for military applications during World War II. In recent times, applications of Mg materials for various commercial sectors have been widened via the development of its wrought products, photo-engraving technology, and surface treatment systems⁴.

2 Development of Magnesium Alloys

Despite the various advantages of Mg, its use in the pure form is rather limited due to the issues such as flammability, low corrosion resistance, and inadequate mechanical properties. While its

Damping capacity: material's ability to dissipate elastic strain energy during mechanical vibration or wave propagation.

Electro-magnetic shielding: Practice of blocking the electromagnetic field by using barriers made of conductive or magnetic materials.

Pyrotechnic device: A fireable mechanical device on spacecraft used for separating the spacecraft and rocket, releasing instrument covers, boom (swing arm) or parachutes, and jettisoning the aeroshell.

Electrolysis: process by which the mineral ores are broken down into simpler ions using electric current.

¹ Department of Mechanical Engineering, 9 Engineering Drive 1, National University of Singapore, Singapore, Singapore.

² College of Mechanical and Electrical Engineering, Wenzhou University, Wenzhou 325035, Zhejiang, China.
*ssenseetharaman@yahoo.com

Table 1: Properties of magnesium and aluminium¹.

Properties	Magnesium	Aluminium
Atomic number	12	13
Atomic weight	24.32	26.98
Crystal structure	HCP	FCC
Density	1.74	2.70
Melting point	650	660
Boiling point	1105	2520
Thermal expansion coefficient ($\mu\text{m/mK}$)	25.5	23.6
Elastic modulus (GPa)	45	69
Tensile strength (MPa)	240	320
Specific strength (kNm/kg)	35–260	7–200
Specific stiffness (MNm/kg)	21–29	25–38

Cathodic protection:

Technique used to control the corrosion of a metal surface by making it the cathode of an electrochemical cell.

Hot working:

Processes where metals are plastically deformed above their recrystallisation temperature.

Slip systems:

Set of symmetrically identical slip planes and associated family of slip directions for which the dislocation motion can easily occur and lead to plastic deformation.

HCP:

Hexagonal closed pack.

Hot shortness:

Type of solidification defect characterized by cracking of material along its grain boundaries upon cooling.

BCC:

Body centred cubic.

Age-hardening:

Also known as precipitation hardening, is a type of heat treatment that make use of solid impurities or precipitates for the strengthening process.

ability to corrode in aqueous solution is useful for **cathodic protection** in batteries, structural applications require corrosion resistance. Regarding this mechanical properties, pure Mg has poor ductility and low strength loss due to the inherent paucity of slip **systems** in the **HCP** crystal structure which can be overcome by the right selection of alloying elements⁵.

Aluminium (Al) and Zinc (Zn) are the commonly used alloying elements, as they improve the strength, hardness, and castability of Mg. In general, zinc addition is usually limited to less than 2% to prevent hot **shortness**. On the other hand, Mg–Al alloys become heat treatable when the Al content is more than 6%. While the combined addition of Al and Zn helps to overcome the harmful corrosive effects of iron and nickel impurities, the addition of Zn in combination with Zirconium (Zr) and rare-earth (RE) metals produce precipitation hardened alloys with good strengths. Zr is an effective grain refiner for Mg as its lattice parameters are close to those of Mg ($a_{\text{Zr}}=0.323$ nm, $c_{\text{Zr}}=0.514$ nm, $a_{\text{Mg}}=0.320$ nm, $c_{\text{Mg}}=0.520$ nm). However, the combined addition of Zr and Al is not recommended because of their tendencies to form stable phases. RE elements, in general, improve the ductility, high-temperature creep resistance, and corrosion resistance of Mg. They also facilitate elimination of porosities in cast Mg-alloys as they narrow down the metal freezing range of the alloys. In particular, yttrium with high solid solubility in Mg (12.4%) improves the creep resistance, thermal stability, corrosion resistance, and its deformation behavior (better ductility and work hardening) of wrought Mg–Y alloys when added together with other RE elements such as cerium

or neodymium. Similarly, thorium and strontium addition are also useful to improve the creep performance of Mg-alloys.

Addition of tin improves the fluidity of Mg melt and reduces the cracking tendency during **hot working**. Similarly, silicon (Si) addition also increases the fluidity of molten Mg. However, Si reduces corrosion resistance of Mg. Copper addition more than 0.05% also adversely affects the corrosion resistance of Mg, although the room temperature and high-temperature strengths are improved. In this regard, manganese addition in small quantities eliminates impurities like iron and nickel that are detrimental for the corrosion performance of Mg-alloys.

Lithium (Li) with extremely low density (0.54 g/cc) and high solid solubility is an attractive alloying element for developing lightweight Mg-alloys. The excess addition of lithium (> 11.5%) improves the formability of Mg-alloys by changing the crystal structure from **HCP to BCC**. However, lithium addition negatively affects the flammability and strength of Mg-alloys. In this regard, calcium (Ca) addition is also beneficial for light weighting and oxidation control. While Ca improves rollability of Mg sheets, excess calcium leads to cracking during the welding process. Being a major component of human bone, calcium addition is also beneficial for developing biomedical Mg-alloys. Addition of silver (Ag) is also beneficial for biomedical applications as it improves the antibacterial properties and biocompatibility of Mg-alloys. Ag also improves the mechanical properties by **age-hardening**^{1,5–8}.

According to American Society for Testing and Materials (ASTM), Mg-alloys are named using a standard four-part naming system highlighting

Table 2: ASTM designation of Mg-alloys¹.

Part 1	Part 2	Part 3	Part 4
Major alloying constituents	Amounts of major alloying constituents	Alloy version to distinguish between different alloys with same quantity of major alloying additions	Temper condition
Two alphabets	Two numbers	One alphabet (except I and O)	one alphabet followed by a number
Aluminium (A) Zinc (Z) Zirconium (K) Rare earth (E) Yttrium (W) Thorium (H) Strontium (J) Tin (T) Silicon (S) Copper (C) Manganese (M) Lithium (L) Calcium (X) Silver (Q)			As fabricated (F) Annealed (O) Strain hardened (H1) Strain hardened and partially annealed (H2) Strain hardened and stabilized (H3) Solution heat treated at room temperature (W) Thermally treated, cooled and natural aged (T1) Solution heat treated and cold worked (T3) Solution heat treated (T4) Cooled and artificially aged only (T5) Solution heat treated and artificially aged (T6) Solution heat treated and stabilized (T7) Solution heat treated, cold worked, and artificially aged (T8) Solution heat treated, artificially aged, and cold worked (T9) cooled, artificially aged, and cold worked (T10)

the major alloying elements, its composition, development progress, and the temper condition, as shown in Table 2. For example, in AZ81A-T4, the first section consists of two letters 'A' and 'Z' representing the major alloying elements, aluminium and zinc. The second part consists of two numbers '8' and '1' indicating the amount of major alloying additions (i.e., 8% Al and 1% Zn). The third part consists of a letter highlighting the version of alloy, i.e., 'A' indicates it as the first alloy version with approximately 8% Al and 1% Zn. The fourth part, T4, indicates its temper condition as solution treated.

Mg-alloys can be broadly classified as cast alloys and wrought alloys^{1,5,6}. In cast Mg-alloys, Mg-Al alloys form the major group. While the AZ series alloys with Al and Zn alloying additions have adequate room-temperature mechanical strength, their high-temperature properties are usually inferior. AM series alloys containing minor Mn content without Zn exhibit higher toughness and ductility in addition to salt-water corrosion resistance. For high-temperature and creep requirements, AS, AE, and AJ series alloys developed using silicon, rare earths, and

strontium alloying additions are recommended as they promote the formation of thermally stable intermetallics with Al. In case of Al-free Mg-alloys, the ZK, ZE, WE, and QE series alloys with zinc, rare earths, and silver additions in combination with minor zirconium are ideal for low- and medium-temperature applications. While these alloys exhibit better strength due to **grain refinement** obtained by Zr addition and heat treatment, ZK and ZE series alloys are susceptible to hot shortness due to larger amounts of Zn addition. Thorium-added HK and HM series alloys also exhibit superior mechanical properties, such as high strength and creep resistance. However, they are limited to defence applications such as missile construction due to thorium's radioactivity. Recent works report on heat treatment methods to develop ultra-high-strength Mg-alloys containing very fine nanostructured precipitates and ordered phases^{8,9}.

While the cast alloys are produced directly using die and other casting methods, wrought alloys involve secondary metal forming such as rolling, forging, and extrusion at temperatures more than 300 °C¹⁰. Due to grain refinement and

Grain refinement: Method of strengthening materials by changing their average crystallite (grain) size.

Mechanical anisotropy:

Directionally dependent mechanical properties

Orowan strengthening:

Also known as dislocation bowing, refers to the strengthening of materials by precipitates that are strong enough to resist dislocation penetration.

extensive plastic deformation, wrought alloys usually have superior strength compared to cast alloys. The wrought processing of Mg-alloys develops a strong fibre texture that causes **mechanical anisotropy** and poor ductility. RE additions are considered as beneficial for ductility enhancement due to weakening of fibre texture¹¹. Alloying addition of strontium also produces a two-component texture for formability improvement¹². Li also improves the formability of wrought Mg-alloys as it reduces the axial ratio (c/a) of HCP-Mg and facilitates activation of non-basal prismatic planes¹³. While lithium addition > 11.5 wt.% completely transforms the crystal structure into BCC, lithium addition between 5.5 to 11.5 wt.% results in duplex (HCP + BCC) structure. Recently, severe plastic deformation (SPD) methods like equal channel angular processing (ECAP) are also being used to produce ultra-fine-grained, texture-free Mg-alloys with exceptional strength and ductility¹⁴. Table 3 shows the properties of commercial Mg-alloys.

3 Magnesium-Based Metal Matrix Composites

In addition to strength improvement by alloying, the mechanical properties of Mg can be improved by the incorporation of hard and strong ceramic reinforcements in the form of fibres and particles, i.e., by making magnesium metal matrix composites (Mg MMCs). The properties of MMCs depend on multiple factors such as the strength and stiffness of reinforcement, its compatibility and dispersion in Mg-matrix, and the interfacial integrity. Therefore, reinforcement materials with the following properties are selected to make Mg-composites: (i) low density, (ii) good interfacial bonding, (iii) good wettability, (iv) high hardness and strength, (v) considerable difference in coefficient of thermal expansion (CTE) value for better strengthening, (vi) low corrosion, and (vii) easy availability and cost effectiveness.

The choice of reinforcement also depends on the type of matrix material and manufacturing methods. Table 4 lists the properties of common reinforcements to develop Mg-composites. Most reinforcements improve the strength and wear resistance of Mg-alloys. While the properties of fibre-reinforced composites depend on the orientation of fibres and loading direction, particle reinforcements offer isotropic properties. Table 5 lists the properties of Mg MMCs highlighting the strengthening capabilities of ceramic particle reinforcement.

Addition of particle reinforcement improves the strength and stiffness of Mg-matrix by (i) effective load transfer from soft Mg-matrix to hard and strong reinforcements, (ii) residual stress due to thermal cycling, (iii) enhanced dislocation density due to difference in CTE and modulus between Mg-matrix and reinforcing phases, (iv) grain size strengthening due to grain refinement, and (v) **Orowan strengthening** due to resistance to dislocation motion by the hard reinforcement particles^{27,28}. Addition of nano-sized particle reinforcement in small amounts (< 5 vol%) produces similar or superior strengthening effect when compared to larger amounts of micron-sized particles (Fig. 1)^{29–31}. In micron-sized particle-reinforced MMCs, the weak particle–matrix interface along with particle cracking results in their premature failure and poor ductility, and hence is only effective for strength improvement at the expense of ductility. In contrast, in nano-sized particle-reinforced MMCs, the effective dispersion of nano-reinforcements contributes to strengthening without any adverse effects on ductility (Table 5)^{29–31}. Therefore, nanoparticles have received substantial research attention as reinforcement to improve the mechanical properties of Mg. Published literature on Mg-nano-composites highlights combined addition of more than one type of reinforcement to derive multiple benefits³². Such hybrid composites are ideal for property optimisation including control of local microstructure, wettability enhancement, efficient load transfer, and sharing.

Particle reinforcement improves wear resistance of Mg materials. The reduced wear rate of Mg-composites can be directly related to the increase in reinforcement content and hardness as per Archard's wear equation ($Q = kW/H$, where Q is the volume worn per unit sliding distance, W the applied load, H the hardness, and k the wear coefficient)⁴³. The wear mechanism changes with respect to the size of reinforcement particles. While the addition of micron-sized reinforcement particles in larger amounts causes an increase in friction and wear by delamination, the lower volume fraction along with smaller (nano) particle size does not induce severe friction and counter abrasion⁴⁴. In particular, the strain mismatch between Mg-matrix and micro-sized particles causes a variation in the stress distribution at the particle matrix interface resulting in particle debonding and pull out. Mg-nano-composites undergo wear by abrasion, adhesion, and oxide layer formation instead of prominent delamination^{31,44}.

Table 3: Properties of cast and wrought Mg-alloys^{1,3,4,16}

Alloy	Density (g/cc)	Process	(Temper)	Tensile strength (MPa)	Yield strength (MPa)	Elongation (%)
AZ31B (Al: 2.5–3.5%; Zn: 0.6–1.4%; Mn: 0.2% min)	1.77	Extrusion	(F)	260	200	15
			(T4)	255	150	21
		Sheets	(T6)	290	220	15
		Forging	(F)	260	195	9
AZ61A (Al: 2.5–3.5%; Zn: 0.6–1.4%; Mn: 0.2% min)	1.77	Extrusion	(F)	310	230	16
		Forging	(F)	195	180	12
AZ63 (Al: 6%, Zn: 3%, Si: 0.3, Mn: 0.1%)	1.83	Sand casting	(F)	200	97	6
			(T4)	275	97	12
			(T5)	200	105	4
			(T6)	275	130	5
AZ80A (Al: 7.8–9.2%; Zn: 0.2–0.8%; Mn: 0.12% min)	1.8	Extrusion	(F)	340	250	11
			(T5)	380	275	7
		Forging	(F)	315	215	8
			(T5)	345	235	5
			(T6)	345	250	5
AZ81 (Al: 7.6%, Zn: 0.7%, Mn: 0.13%)	1.8	Sand casting	(T4)	275	85	15
AZ91A, B, D (Al: 9%, Zn: 0.7%, Mn: 0.3%)	1.81	Sand casting	(F)	185	150	3
			(T4)	250	80	4.5
			(T6)	230	130	2.3
AZ91C, E (Al: 9%, Zn: 0.7%, Mn: 0.3%)	1.81	Sand casting	(F)	165	95	-
			(T4)	275	85	-
			(T6)	275	195	-
AS21 (Al: 2.2%, Si: 1%, Mn: 0.1%)	1.78	Die casting	(F)	220	120	7
AS41A, B (Al: 4.25%, Mn: 0.35%)	1.78	Die casting	(F)	240	140	8
AE42 (Al: 4%, RE: 2.4%, Mn: 0.25%)	1.79	Die casting	(F)	230	145	6
AE44 (Al: 4%, RE: 4%)	1.82	High-pressure die casting	(F)	245	142	10
AJ62 (Al: 6%, Sr: 2.4%)	1.8	High-pressure die casting	(F)	240	143	3
AM20 (Al: 2%, Zn: 0.2%, Mn: 0.2%, Si: 0.05%)	1.75	Die casting	(F)	210	90	20
AM50 (Al: 5%, Mn: 0.35%)	1.77	Die casting	(F)	230	125	8
AM60A, B (Al: 6%, Mn: 0.3%)	1.8	Die casting	(F)	220	130	6
AM100A (Al: 10%, Mn: 0.1%)	1.83	Sand casting	(F)	150	83	2
			(T6)	275	110	4
ZK51 (Zn: 4.5%, Zr: 0.7%)	1.83	Sand casting	(T5)	276	165	3
ZK60A (Zn: 4.8–6.2%; Zr: 0.45% min)	1.83	Extrusion	(F)	340	250	14
			(T5)	365	305	11
		Forging	(T5)	305	260	16
			(T6)	325	270	11
ZE41 (Zn: 4.2%, RE: 1.2%, Zr: 0.7%)	1.84	Sand casting	(T5)	205	140	3.5

Table 3: (continued)

Alloy	Density (g/cc)	Process	(Temper)	Tensile strength (MPa)	Yield strength (MPa)	Elongation (%)
ZE33 (Nd: 3.5%, Zr: 0.7%)	1.8	Sand casting	(T5)	160	105	3
ZE63 (Zn: 5.7%, RE: 2.5%, Zr: 0.7%)	1.87	Sand casting	(T6)	295	190	7
WE43 (Y: 4.75%, Nd: 3%, Zr: 0.7%, Zn: 0.2%)	1.8	Sand casting	(T6)	235	190	4
WE54 (Y: 5.25%, RE: 1.75%, Nd: 1.75%)	1.8	Sand casting	(T6)	270	190	4
EQ21 (Nd: 2.5%, Ag: 1.5%, Zr: 0.7%)	1.81	Sand casting	(T6)	234	172	2
QE22 (Ag: 2.5%, RE: 2%, Zr: 0.6%)	1.81	Sand casting	(T6)	275	205	4
ZC63 (Zn: 6.5%, Cu: 3%, Mn: 0.75%)	1.87	Sand casting	(T6)	210	125	4
ZC71 (Zn: 6–7%; Cu: 1–1.5%; Mn: 0.5–1%)	1.83	Extrusion	(F)	360	340	5
HM31 (Th: 2.5–3.5%; Mn: 1.2% min)	1.8	Extrusion	(F)	290	230	10
			(T5)	300	270	10
HK31A (Th: 2.5–3.5%; Mn: 1.2% min)	1.8	Sheets	(T6)	255	200	9

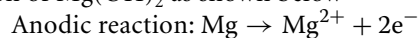
Table 4: Properties of common reinforcement materials¹⁶

Material	Crystal structure	Density (g/cc)	Melting point (°C)	Thermal conductivity (W/mK)	Thermal expansion coefficient (µm/mK)	Modulus GPa
Al ₂ O ₃	Hexagonal closed pack	3.9	2050	25	8.3	410
AlN	Hexagonal closed pack	3.25	2300	10	6	350
B ₄ C	Rhombohedral	2.52	2450	29	5–6	450
BN	Hexagonal closed pack	2.2	3000	25	3.8	90
SiC	Hexagonal closed pack	3.21	2300	59	4.7–5	480
Si ₃ N ₄	α-Trigonal β-Hexagonal closed pack γ-Cubic	3.29	1900	29	3.3	310
TiB ₂	Hexagonal closed pack	4.5	2900	27	7.4	370
TiC	Cubic	4.93	3140	29	7.4	320
TiN	Cubic	5.24	2950	29	9.4	600
WC	Hexagonal closed pack	15.7	2800	110	5.2	690

4 Corrosion of Magnesium-Based Materials

The mechanism of corrosion in metallic materials depends on multiple factors such as corrosion medium, composition, microstructure features (e.g., presence of grain boundary precipitates and elemental segregation), and surface film properties. Due to its low electrochemical

potential, Mg undergoes severe galvanic corrosion when in contact with other relatively noble metals and ceramics⁴⁵. Wet corrosion of magnesium in aqueous medium involves the formation of Mg(OH)₂ as shown below



Cathodic reaction:

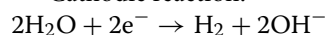


Table 5: Tensile properties of pure Mg-based MMCs reinforced with ceramic reinforcements.

Reinforcement	Reinforcement size (μm)	Vol. (%)	Processing method ^a	Tensile strength (MPa)	Yield strength (MPa)	Elongation (%)	Reference				
Al ₂ O ₃	1	1.1	PM + HE	227	172	16.8	17				
	0.3	1.1		237	182	12.1					
	0.3	0	MWS-PM + HE	168	117	2.8	18				
		5		215	160	3.9					
		2.5		167	130	4					
	0.3	0.7	DMD + HE	261	214	12.5	19				
		1.1		251	200	8.6					
		2.5		281	222	4.5					
	0.05	0	PM + HE	193	132	4.2	20				
				232	169	6.5					
				247	191	8.8					
				250	194	6.9					
		0	DMD + HE	173	97	7.4					
				207	146	8					
				229	170	12.4					
246				175	14						
SiC	0.5–25	0	SPS + HE		115		21				
					130						
					140						
					120						
	25	0	DC	199	110	10.2	22				
				191	112	6.8					
				177	112	4.7					
				154	114	1.8					
	40	30	SC	258	229	2	23				
				0.6	0	DMD + HE		207	153	9.2	24
								219	182	2.1	
		5.8	221	171	1.5						
		9	207	155	1.4						
	35	0	DMD + HE	219	153	3.1	25				
				205	158	12.1					
	0.05	0	MWS-PM + HE	172	125	5.8	26				
				194	132	6.3					
				194	144	7					
203				157	7.6						

^a DC: die casting; DMD: disintegrated melt deposition; HE: hot extrusion; PM: powder metallurgy; MWS-PM: microwave sintering-assisted powder metallurgy; SC: stir casting; SPS: spark plasma sintering

Product formation:
 $Mg^{2+} + 2OH^{-} \rightarrow Mg(OH)_2$.

Combined with the poor stability of Mg(OH)₂ films, the continued releases of Mg²⁺ anions cause excessive loss of material by chloride formation when exposed to chloride ions

as shown below. Similarly, the segregation of grain boundary phases and reinforcements also results in intergranular corrosion⁴⁶. While the evolution of hydrogen gas declines the rate of degradation, the weak nature of protective oxide film results in faster degradation

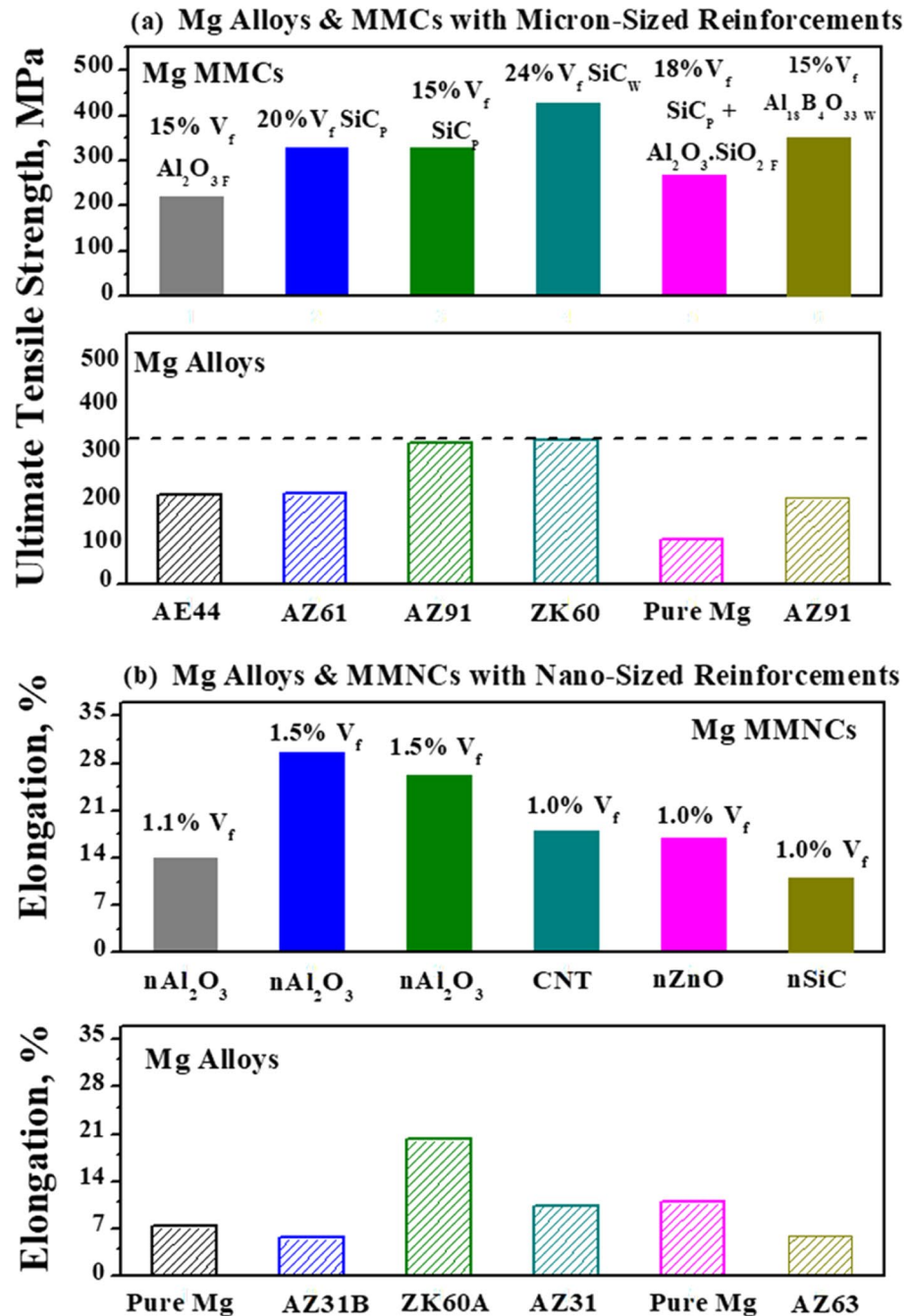


Figure 1: Mechanical properties of Mg-based metal matrix composites^{38,39–42}.

Anodic reaction: $Mg \rightarrow Mg^{2+} + 2e^-$
 Cathodic reaction:
 $Mg + 2H_2O \rightarrow Mg(OH)_2 + H_2$
 Product formation:
 $Mg(OH)_2 + 2Cl^- \rightarrow MgCl_2$
 Product formation: $Mg^{2+} + 2Cl^- \rightarrow MgCl_2$.

Biodegradability of Mg makes it suitable for temporary implant applications⁴⁷. Furthermore, the properties of Mg match closely with that of

human bone as shown below (Table 6). However, faster degradation of Mg in body fluids combined with toxicity risks from alloying additions and reinforcement necessitates extensive research on the biocorrosion and cytotoxicity attributes of Mg materials. While the addition of Zr, Mn, and RE improves the corrosion resistance of Mg, alloying elements such as Ca, Mn, Zn, and Ag are beneficial in retaining the biocompatibility of Mg

Biocompatibility: Describes the property of a material being compatible with living tissue.

Table 6: Properties of implant materials⁴⁷.

Material	Density (g/cc)	Elastic modulus (GPa)	Compressive yield strength (MPa)
Cortical bone	1.6–2.0	5–23	164–240
Cancellous bone	1.0–1.4	0.01–1.5	–
Ti6Al4V	4.5	114	–
Synthetic HA	3.05–3.15	70–120	100–900
DL-PLA	–	1.9–2.4	–
Cast magnesium	1.74	41	–
Die cast AZ91D	1.81	45	160
Extruded AZ31	1.78	45	60–70
Extruded WE43 T5	1.84	44	–
Stainless steel	7.7	189–205	170–310

Corrosion Resistance

Harmful	Beneficial / Neutral	Compatible	Allergic	Toxic
<ul style="list-style-type: none"> • Fe • Ni • Cu • Sn • Ag 	<ul style="list-style-type: none"> • Mn • Zr • RE • Y • Zn • Ca • Li 	<ul style="list-style-type: none"> • Ca • Mn • Zn • Ag • Si • Sr • HAp • FA • Y-TZP 	<ul style="list-style-type: none"> • RE • Y • Zr • Cu • Si • Si₃N₄ • TiB₂ • TiC • TiN 	<ul style="list-style-type: none"> • Al • Li • Sn • Ni • ZnO • CNT

Biocompatibility

Figure 2: Effects of alloying additions and reinforcement on the corrosion resistance and biocompatibility of Mg.

(Fig. 2). In general, particle reinforcements increase the galvanic corrosion in Mg. However, recent studies establish the benefits of nano-sized reinforcements as they can improve the surface chemical activity and promote the formation of protective surface films. The actual benefits depend on the type of reinforcement and processing methods.

5 Processing of Mg-Based Materials

A variety of processing methods are used to produce Mg-based materials which are broadly classified into: (i) solid-phase processing and (ii) liquid-phase processing. Processing method should be selected, such that it can produce materials with homogeneously distributed

reinforcement particulates, which is essential to achieve desired mechanical properties³⁰.

Solid-phase processes based on blend-press-sinter and mechanical alloying methods yield better strength properties due to less segregation and minimal brittle interfacial reaction products⁴⁸. Blend-press-sinter technique is a solid-state processing method which involves blending or mixing of raw materials in powder form, followed by compaction and sintering. In some cases, the powder materials are also subjected to reactive ball milling that involves repeated cold welding, fracturing, and re-welding of powder particles in a high-energy ball mill. While the frictional heat developed at the particle interface results in local melting and consolidation of the powder

particles, the rapid heat extraction by the cooler particle interior causes rapid solidification. Mechanical alloying can be used to synthesize a variety of high-strength equilibrium and non-equilibrium alloys/composites due to the high dislocation density and homogenous distribution of reinforcing constituents. Recent works report powder-based additive manufacturing techniques for the processing of Mg materials⁴⁹.

Compared to solid-state processing, liquid-phase processing methods such as sand casting, gravity or pressure die casting, stir casting, and melt infiltration are economical for large quantity production of Mg materials³⁰. These methods involve melting of selected raw material followed by pouring and solidification in a mould. The limitations of melt processing methods include the need of protective gases, formation of defects such as shrinkage and porosity, and difficulty in producing complex-shaped components. Spray deposition is also a liquid-phase processing method in which the molten metal is sprayed or deposited onto a substrate⁵⁰. While high solidification rates and fine grain microstructure are the major advantages, spray deposition is often not economical due to excessive material wastage and residual porosity. A similar method, disintegrated melt deposition (DMD) inherits the combined benefits of stir casting, spray forming, and gravity die casting to offer fine grain structure^{30,51}. In addition to primary processing methods as described above, secondary processing methods such as rolling, forging, and extrusion are used to produce wrought Mg materials¹⁰.

To join Mg materials, a range of welding operations are used such as spot welding, seam welding, resistance welding, gas metal arc welding (MIG or GMAW), gas tungsten arc welding (TIG or GTAW), laser welding, or electron beam welding⁵². Fusion welding of Mg die castings is challenging due to the presence of porosity and brittle intermetallic phases. Solid-state welding methods such as magnetic pulse welding and friction stir welding are useful to achieve good weld quality⁵³. Magnetic welding depends on the electromagnetic pulse, the frictional heat generated by a rotating tool used in friction stir welding. These methods minimize the formation of brittle intermetallics and are also useful in joining Mg with dissimilar metals including aluminium and steel. Adhesive bonding is also used to join Mg materials, although it requires extensive surface preparation to overcome corrosion and oxidation issues.

6 Applications of Magnesium-Based Materials

6.1 Aerospace Applications

Being lightweight, Mg-based materials are ideal materials for structural weight reduction in transportation sector. Currently, most aircraft manufacturers including Airbus, Boeing, and Embraer have limited the use of Mg to non-structural applications because of the restrictions by Federal Aviation administration due to concerns associated with ignition and flammability. In the past, Mg was extensively used in military aircrafts and examples include B-36 aircraft bomber which contained 19,000 lbs of magnesium, Eurofighter Typhoon, Tornado, and F16. Other well-known examples of Mg applications in aircrafts include the main transmission of Sikorsky UH60 and S92, the auxiliary casing of F119, PW305 turbofan, and thrust reverser cascade in 737, 747, 757, and 767 aeroplanes. With FAA's ban being lifted recently, alloys such as Elektron 21 and WE43 are approved for the in-cabin usage in commercial aircrafts⁵⁴. Space industry is also exploring the use of Mg to manufacture satellite components⁵⁵. Figure 3 shows the current and potential aerospace applications of Mg materials.

6.2 Automobile Applications

In automobiles, Mg is predominantly used as sheets or engine blocks and components such as instrument panel, dashboard, steering wheel, components of steering wheel column, power trains, and transfer case, as shown in Fig. 4^{56, 57}. However, use of Mg for critical engineering components and assemblies is restricted due to its poor corrosion resistance. Although the isolation of Mg parts would be effective to overcome galvanic corrosion, cost-effective coatings, and methods are required to realize the complete potential of Mg in automotive applications. Table 7 lists some of the current application examples of Mg materials in automobiles.

6.3 Electronic Applications

The lightweight and heat dissipation capabilities of Mg combined with damping, electromagnetic shielding, and recycling benefits promote its use in consumer electronics such as the casings for mobile phones, cameras, and laptops, as shown in Fig. 5⁵⁸. Compared to lightweight plastics used in electronic packaging, Mg offers additional benefits in terms of electromagnetic shielding and recyclability. In particular, the composites containing particle reinforcements

Passenger Jet: Rudder Pedal Assembly uses 3-piece Mg-die-cast alloy that is durable and 35% lighter than Al-parts used.
© Photos courtesy of Ortal Diecasting Company

AgustaWestland AW139 Helicopter: Mg Seat Arm Supports, offers significant weight reduction and energy absorption.
© Photo courtesy of Gulfstream

Convair B-36 Peacemaker: 8600 kg of magnesium!

Mg Seat Arm Support withstands dynamic testing and is specifically designed to prevent injury during a crash.
© Photo courtesy of AgustaWestland

Aircraft Door Parts and Back Panel made of AZ31B Mg-alloy.
© Photos courtesy of Palbam AMTS Israel

20 % Weight Reduction → 10 % Fuel & Cost Savings

Figure 3: Mg-based materials used in aerospace applications.

Ford F-150 Pick-up truck: Lightweight Mg-components retain high strength. © Photo courtesy of Ford Motor Company

Mg Front-end Structure in Ford F-150 holds radiator, supports front-end sub system and hood latching mechanism.
© Photo courtesy of Meridian Lightweight Tech. Inc.

Durable Mg-alloy Automotive Components : Extremely light, with high strength and structural integrity.
© Photo by Mark Fergus, courtesy of CSIRO, Australia

Yamaha YZF-R6 Motorcycle: Mg-Rear Subframe provides strength and stability with more effective weight distribution. Being 20% lighter than Al, it maintains rigid strength and consistent quality for mass production
© Photo courtesy of Yamaha Motor Corporation, U.S.A.

TGV® Duplex Highspeed Train: Mg-components to seat thousands of passengers in comfort every day.
© Photo courtesy of Alstom Transport/M. Spera

Appremia TGV® Seats: Mg-components in lightweight **Double Seats** provide long-term durability & cost-effectiveness.
© Photos courtesy of Grupo Antolin

Figure 4: Mg-based materials used in automobiles.

were found to have superior electromagnetic shielding capabilities⁵⁹. With respect to recyclability, Mg scrap can be fully recovered and recycled with only 5% of the energy needed to produce primary Mg-alloys⁶⁰. In addition, Mg is also being considered as a medium for hydrogen storage applications⁶¹.

6.4 Biomedical Applications

Mg has properties comparable to those of human bone and is hence ideal for making bone implants as they tend to reduce the stress shielding effects unlike other implant materials such as Ti or steels that have extremely high elastic modulus^{47,62,63}. Its natural degradation in the human body together with biocompatibility eliminates the

Table 7: Examples of Mg-alloy applications in automobiles⁵⁶.

Component	Car models
Engine and transmission parts	
Engine block	BMW (N52), Ford, Porsche (911)
Intake manifold	BMW (V8 motor), GM (V8 North Star motor), Chrysler
Lower crankcase	Chrysler (Jeep), Alfa Romeo (GTV), GM (Oldsmobile), McLaren Motors (F1–V12)
Transmission case	AutoZAZ-Daewoo (Tavria, Slavuta, Daewoo-Sens), Volvo Motors (LCP), Porsche AG (911 series), Volkswagen (Volkswagen Passat), Audi (A4, A6), Mercedes-Benz, Ford (Bronco, Aerostar 1994)
Gearbox and controls housing	AutoZAZ-Daewoo (Tavria, Slavuta, Daewoo-Sens)
Cylinder block	GM (Pontiac Gran AM, Corvette)
Cylinder head	Dodge (Dodge Ram), Honda Motors (City Turbo), Alfa Romeo (GTV), AutoZAZ-Daewoo (Tavria, Slavuta, Daewoo-Sens), Honda, BMW, Ford, Isuzu, Volvo Motors (LCP), Chrysler
Camshaft drive chain case (AZ91D)	Porsche AG (911 series), Chrysler (Jeep 1993, Viper)
Clutch case (AZ91B, AZ91D, AZ91HP)	Alfa Romeo (GTV), AutoZAZ-Daewoo (Tavria, Slavuta, Daewoo-Sens), Volvo Motors (LCP), Ford (Ranger), GM (Corvette)
Oil pan and pump housing	Ford (Ranger), Chrysler (Jeep), Chrysler (Viper), McLaren Motors (F1–V12)
Engine cradle	Ford, GM (Corvette)
Brackets (brake pedal, clutch, and accelerator)	Ford, GM, Chrysler
Interior parts	
Steering wheel frame	Ford (Thunderbird, Cougar, Taurus, Sable, Ranger), Chrysler (Chrysler Plymouth, LH Midsize 1993), Toyota, BMW (MINI), Lexus (Lexus LS430), GM (Oldsmobile, Pontiac, Buick)
Steering link bracing	GM (LH Midsize)
Instrument panel	GM, Chrysler (Jeep), Ford, Audi (A8), Toyota (Toyota Century)
Seat frame	GM (Impact), Mercedes-Benz (Mercedes Roadster 300/400/500 SL), Lexus (Lexus LS430)
Brake and clutch pedal	GM Oldsmobile, Pontiac, Buick
Door inner	Aston Martin (DB9 2004)
Console bracket	Ford
Air bag retainer	Chrysler
Chassis components	
Wheel rims	Toyota (Toyota 2000GT, Toyota Supra), Alfa Romeo (GTV), Porsche AG (944 and 911)
Lift gate	Chrysler (Pacifica 2017), Lincoln (MKT Luxury Crossover 2010), Mercedes (E-Class T-Model 2009), Aston Martin (Vanquish S 2017)
Valve cover	GM (Corvette)
ABS mounting bracket	Ford, Chrysler

need for corrective surgery, thereby reducing the risk of multiple surgeries and associated health care costs. Being a nutrient required for enzyme reactions and metabolic processes, Mg released into human body upon degradation is well tolerated by the human biosystem. Recent research works confirm the healing and bone formation potential of Mg implants⁶⁴. Furthermore, the excellent machinability of Mg also facilitates the machining of implants with intricate shapes and

size. Currently used bone implants include bone screws, pins, surgical plates, clips, sutures, and wires. Other than bone implants, resorbable scaffolds made of Mg are also being explored for coronary vascular intervention. Figure 6 shows a few examples of Mg-based materials used in biomedical applications.

As seen in Figs. 3, 4, 5 and 6, Mg-alloys are being widely used in applications related to aerospace, automobiles, consumer electronics, and



Figure 5: Applications of Mg-based materials in consumer electronics.

biomedical sectors, both in the cast and wrought forms. However, Mg-composites with both micron-sized and nano-sized reinforcements are still in the development stage, with alumina and SiC being the widely researched reinforcements due to their ease of processing, availability, cost, and compatibility with most of the Mg-matrices.

In Mg-composites containing micron-sized reinforcements, despite having high strength, high-temperature stability, and wear resistance, their applications are restricted to cast components due to their limitation in ductility (Table 5; Fig. 1a). Mg–Al-based alloy matrices such as AZ31 and AZ91 have been widely explored under various loading conditions and superior properties have been observed when compared to the unreinforced alloys. The AZ alloy-based micron-sized reinforced composites (with Al_2O_3 and SiC reinforcements) can hence effectively replace most of the existing cast Mg-alloy components in automobiles and aerospace sectors. In particular, for enhanced creep resistance, currently Al-free Mg-alloys or Mg–Al-RE alloys are preferred, although they are relatively expensive than AZ alloys. Considering the enhanced thermal stability and excellent creep resistance of cast AZ-based composites with micron-sized reinforcements, these composites are better alternatives for power train applications⁶⁷.

The greatest advantage of Mg-composites with nano-sized reinforcements is their excellent

ductility, which is much higher than the unreinforced Mg-alloys as well as micron-sized reinforced composites. Pure Mg is not suitable for engineering applications at large due to its low ductility. From Table 3 and Fig. 1b, it is noteworthy that by the incorporation of nano-reinforcements, the ductility of pure Mg is significantly improved. Given the absence of undesired interfacial reactions and low-volume fraction of nano-reinforcement used, pure Mg-based nano-composites that still remain unexplored can be considered for future applications in wrought components, for non-critical applications. In particular, Mg-nano-composites with nano-alumina are promising materials in (a) sports cycles and bikes that would provide light weight, higher damping, and maneuverability, (b) frames/chassis of consumer electronics, which require nominal strength with enhanced toughness, and (c) seat pedal assembly and arm support in aircraft seats that require formability. Incorporation of pure Mg with biocompatible nano-reinforcements such as hydroxyapatite and alloying elements such as Ca or Zn would make them suitable for biomedical implants. Nevertheless, the need to investigate other properties such as fatigue, wear, corrosion, and oxidation behavior is critical. This will better the understanding of their performance and will ensure wider applicability of Mg-nano-composites.

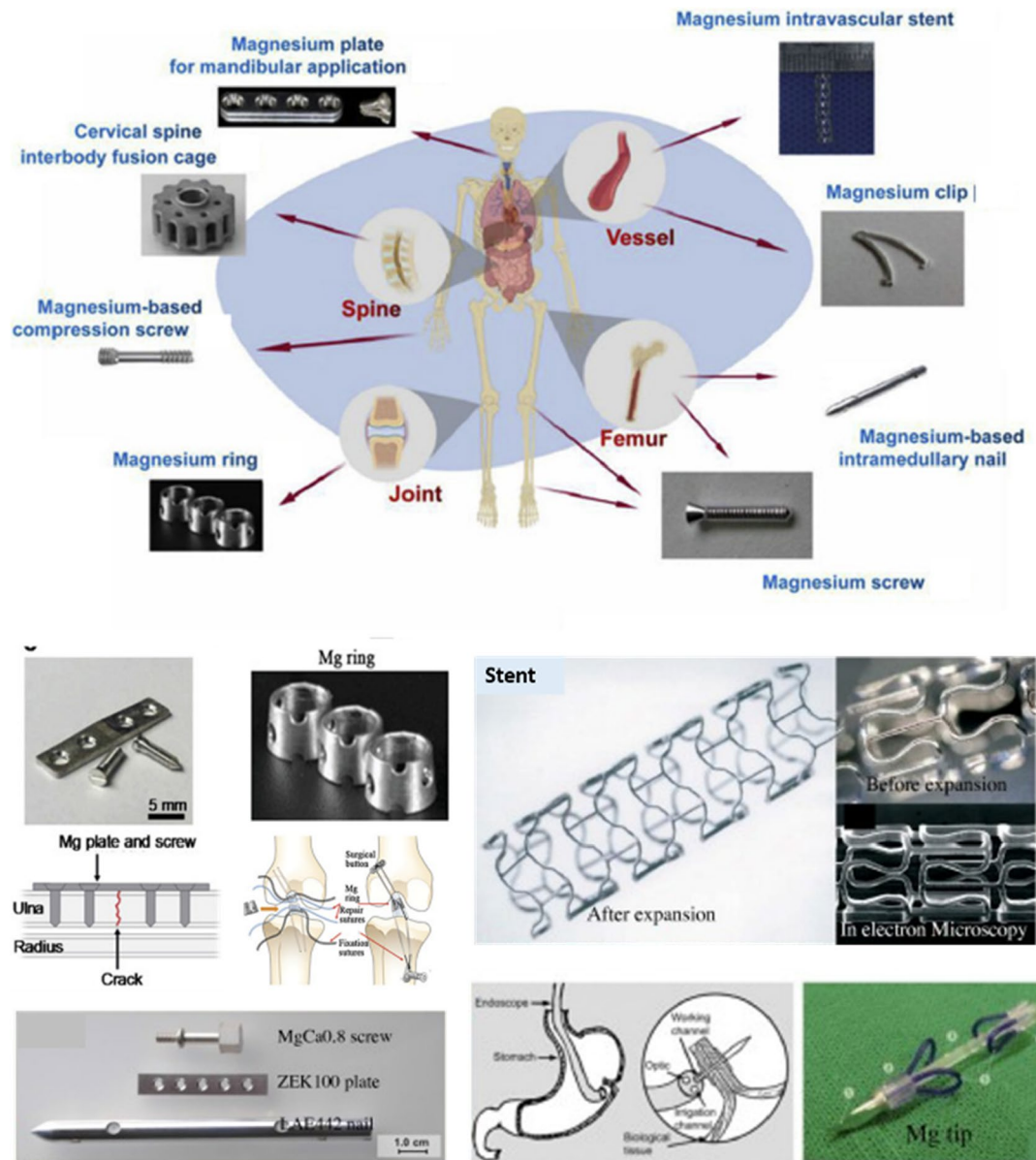


Figure 6: Mg-based materials in biomedical applications (from open access References^{45,46}).

7 Concluding Remarks

Magnesium-based materials possess attractive properties such as low density, high strength-to-weight ratio, damping capacity, machinability, and biocompatibility. These properties make Mg materials attractive for various engineering and biomedical applications. Especially, the transportation sector aims to exploit its light weighting capabilities for fuel energy savings and emission control. In recent years, Mg materials are being considered for biomedical applications. However, some limitations of Mg materials include

poor room-temperature formability, strength loss at elevated temperature, oxidation, corrosion, and flammability. Some of these issues are being addressed by development of new cast and wrought Mg-alloys. While most alloying additions are beneficial, superior properties can be realized using rare-earth additions. However, the non-availability of rare-earth metals makes them economically not viable. Research on use of low cost and nano-sized reinforcements and processing methods will contribute towards enhanced utilization of Mg materials and also for a wider spectrum of emerging applications.

Publisher's Note

Springer Nature remains neutral with regard to jurisdictional claims in published maps and institutional affiliations.

Declarations

Conflict of Interest

On behalf of all authors, the corresponding author states that there is no conflict of interest.

Received: 28 July 2021 Accepted: 1 November 2021
Published: 12 February 2022

References

1. Avedesian MM, Baker H (1999) ASM specialty handbook: magnesium and magnesium alloys. ASM International
2. Wulandari W, Brooks G, Rhamdhani M, Monaghan B (2010) Magnesium: current and alternative production routes
3. Mordike BL, Ebert T (2001) Magnesium: properties—applications—potential. *Mater Sci Eng A* 302(1):37–45
4. Eliezer D, Aghion E, Froes FHS (1998) Magnesium science, technology and applications. *Adv Perform Mater* 5(3):201–212
5. Czerwinski F (2011) Magnesium alloys: design, processing and properties. BoD Books on Demand
6. Pegguleryuz MO, Kainer K, Kaya AA (2013) Fundamentals of magnesium alloy metallurgy. Elsevier
7. Luo AA (2004) Recent magnesium alloy development for elevated temperature applications. *Int Mater Rev* 49(1):13–30
8. Bamberger M (2001) Structural refinement of cast magnesium alloys. *Mater Sci Technol* 17(January):15–24. <https://doi.org/10.1179/026708301101509061>
9. Pan F, Yang M, Chen X (2016) A review on casting magnesium alloys: modification of commercial alloys and development of new alloys. *J Mater Sci Technol* 32(12):1211–1221
10. Pegguleryuz MO (2012) Current developments in wrought magnesium alloys. In: *Advances in wrought magnesium alloys: fundamentals of processing, properties and applications*, pp 3–62. <https://doi.org/10.1016/B978-1-84569-968-0.50001-6>
11. Rokhlin LL (2003) Magnesium alloys containing rare earth metals: structure and properties. CRC Press
12. Hazeli K, Sadeghi A, Pegguleryuz MO, Kontsos A (2013) The effect of strontium in plasticity of magnesium alloys. *Mater Sci Eng A* 578:383–393
13. Haferkamp H, Niemeyer M, Boehm R, Holzkamp U, Jaschik C, Kaese V (2000) Development, processing and applications range of magnesium lithium alloys. *Mater Sci Forum* 350:31–42
14. Lapovok R, Estrin Y (2012) Superplasticity in magnesium alloys by severe plastic deformation. In: *Advances in wrought magnesium alloys: fundamentals of processing, properties and applications*, pp 144–185. <https://doi.org/10.1016/B978-1-84569-968-0.50004-1>
15. Moosbrugger C (2017) Engineering properties of magnesium alloys. ASM International
16. Kainer KU (2006) Basics of metal matrix composites. *Met Matrix Compos* 1–54
17. Hassan SF, Gupta M (2006) Effect of length scale of Al₂O₃ particulates on microstructural and tensile properties of elemental Mg. *Mater Sci Eng A* 425(1–2):22–27
18. Wong WLE, Karthik S, Gupta M (2005) Development of high-performance Mg–Al₂O₃ composites containing Al₂O₃ in submicron length scale using microwave assisted rapid sintering. *Mater Sci Technol* 21(9):1063–1070
19. Hassan SF, Gupta M (2008) Effect of submicron size Al₂O₃ particulates on microstructural and tensile properties of elemental Mg. *J Alloy Compd* 457(1–2):244–250
20. Hassan SF (2006) Creation of new magnesium-based material using different types of reinforcements
21. Muhammad WNAW, Sajuri Z, Mutoh Y, Miyashita Y (2011) Microstructure and mechanical properties of magnesium composites prepared by spark plasma sintering technology. *J Alloy Compd* 509(20):6021–6029
22. v Lim SC, Gupta M, Lu L (2001) Processing, microstructure, and properties of Mg–SiC composites synthesised using fluxless casting process. *Mater Sci Technol* 17(7):823–832
23. Saravanan RA, Surappa MK (2000) Fabrication and characterisation of pure magnesium-30 vol.% SiCP particle composite. *Mater Sci Eng A* 276(1–2):108–116
24. Reddy SU, Srikanth N, Gupta M, Sinha SK (2004) Enhancing the properties of magnesium using SiC particulates in sub-micron length scale. *Adv Eng Mater* 6(12):957–964
25. Soon LP, Gupta M (2002) Synthesis and recyclability of a magnesium-based composite using an innovative disintegrated melt deposition technique. *Mater Sci Technol* 18(1):92–98
26. Wong WLE, Gupta M (2006) Simultaneously improving strength and ductility of magnesium using nano-size SiC particulates and microwaves. *Adv Eng Mater* 8(8):735–740
27. Lloyd DJ (1994) Particle reinforced aluminium and magnesium matrix composites. *Int Mater Rev* 39(1):1–23
28. Everett RK, Arsenault RJ (1991) Metal matrix composites: mechanisms and properties
29. Gupta M, Wong WLE (2015) Magnesium-based nanocomposites: lightweight materials of the future. *Mater Charact* 105:30–46
30. Gupta M, Sharon NML (2010) Magnesium, magnesium alloys, and magnesium composites. <https://doi.org/10.1002/9780470905098>

31. Seetharaman S, Tekumalla S, Gupta M (2020) Magnesium-based nanocomposites. IOP Publishing
32. Seetharaman S, Subramanian J, Singh RA, Gupta M (2021) An insight into magnesium based metal matrix composites with hybrid reinforcement. In: Encyclopedia of materials: composites
33. Hu B, Peng L, Powell BR, Balough MP, Kubic RC, Sachdev AK (2010) Interfacial and fracture behavior of short-fibers reinforced AE44 based magnesium matrix composites. *J Alloy Compd* 504(2):527–534
34. Zhang X, Zhang D, Wu R, Zhu Z, Wang C (1997) Mechanical properties and damping capacity of (SiC w+ B 4 C p)/ZK60A Mg alloy matrix composite. *Scripta Mater* 37(11):1631–1635
35. Zheng MY, Wu K, Liang M, Kamado S, Kojima Y (2004) The effect of thermal exposure on the interface and mechanical properties of Al18B4O33w/AZ91 magnesium matrix composite. *Mater Sci Eng A* 372(1–2):66–74
36. Gu J, Zhang X, Gu M (2004) Mechanical properties and damping capacity of (SiCp + Al₂O₃ SiO₂f)/Mg hybrid metal matrix composite. *J Alloy Compd* 385(1–2):104–108
37. Hassan SF, Gupta M (2005) Enhancing physical and mechanical properties of Mg using nanosized Al₂O₃ particulates as reinforcement. *Metall and Mater Trans A* 36(8):2253–2258
38. Nguyen QB, Gupta M (2008) Increasing significantly the failure strain and work of fracture of solidification processed AZ31B using nano-Al₂O₃ particulates. *J Alloy Compd* 459(1–2):244–250
39. Paramsothy M, Hassan SF, Srikanth N, Gupta M (2010) Simultaneous enhancement of tensile/compressive strength and ductility of magnesium alloy AZ31 using carbon nanotubes. *J Nanosci Nanotechnol* 10(2):956–964
40. Sun K, Shi QY, Sun YJ, Chen GQ (2012) Microstructure and mechanical property of nano-SiCp reinforced high strength Mg bulk composites produced by friction stir processing. *Mater Sci Eng A* 547:32–37
41. Jayaramanavar P, Paramsothy M, Balaji A, Gupta M (2010) Tailoring the tensile/compressive response of magnesium alloy ZK60A using Al₂O₃ nanoparticles. *J Mater Sci* 45(5):1170–1178
42. Tun KS, Jayaramanavar P, Nguyen QB, Chan J, Kwok R, Gupta M (2012) Investigation into tensile and compressive responses of Mg–ZnO composites. *Mater Sci Technol* 28(5):582–588
43. Alahelisten A, Bergman F, Olsson M, Hogmark S (1993) On the wear of aluminium and magnesium metal matrix composites. *Wear* 165(2):221–226
44. Jayalakshmi S et al (2020) Mechanical properties and tribological behavior of magnesium metal matrix composites with micron-sized and nano-sized reinforcements. In: Reference module in materials science and materials engineering. <https://doi.org/10.1016/B978-0-12-819726-4.00045-4>
45. Song G-L (2011) Corrosion of magnesium alloys. Elsevier
46. Gusieva K, Davies CHJ, Scully JR, Birbilis N (2015) Corrosion of magnesium alloys: the role of alloying. *Int Mater Rev* 60(3):169–194
47. Gupta M, Meenashisundaram GK (2015) Insight into designing biocompatible magnesium alloys and composites: processing, mechanical and corrosion characteristics. Springer
48. Bettles CJ (2008) Magnesium powder metallurgy: process and materials opportunities. *J Mater Eng Perform* 17(3):297–301
49. Jahangir MN, Mamun MAH, Sealy MP (2018) A review of additive manufacturing of magnesium alloys. In: AIP conference proceedings, 2018, vol 1980, no 1, p 030026
50. Ebert T, Moll F, Kainer KU (1997) Spray forming of magnesium alloys and composites. *Powder Metall* 40(2):126–130
51. Gupta M, Lai MO, Soo CY (1995) Processing-microstructure-mechanical properties of an Al–Cu/SiC metal matrix composite synthesized using disintegrated melt deposition technique. *Mater Res Bull* 30(12):1525–1534
52. Liu L (2010) Welding and joining of magnesium alloys. Elsevier
53. Kumar RA, Ramesh S, Kedarvignesh ES, Arulchelvam MSA, Anjunath S (2019) Review of Friction stir processing of magnesium alloys. *Mater Today Proc* 16:1320–1324
54. Gwynne B, Lyon P (2007) Magnesium alloys in aerospace applications, past concerns, current solutions
55. Xue LB, Bo ZX, Feng Z, Li-Li J (2021) Application of lightweight magnesium alloy in satellite antenna products. *J Phys Conf Ser* 1885(5):052001
56. Kulecki MK (2008) Magnesium and its alloys applications in automotive industry. *Int J Adv Manuf Technol* 39(9–10):851–865
57. Kaneko T, Suzuki M (2003) Automotive applications of magnesium alloys. *Mater Sci Forum* 419:67–72
58. Landkof B (2000) Magnesium applications in aerospace and electronic industries. In: Magnesium alloys and their applications, pp 168–172
59. Zhang Z-H, Pan F-S, Chen X-H, Liu J (2013) Electromagnetic shielding properties of magnesium and magnesium alloys. *J Mater Eng* 3(1):52–57
60. Javaid A, Essadiqi E, Bell S, Davis B (2006) Literature review on magnesium recycling. *Magnes Technol* 2006:7–12
61. Ouyang L et al (2020) Magnesium-based hydrogen storage compounds: a review. *J Alloys Compd* 832:154865
62. Witte F (2010) The history of biodegradable magnesium implants: a review. *Acta Biomater* 6(5):1680–1692
63. Wang J, Xu J, Hopkins C, Chow DH, Qin L (2020) Biodegradable magnesium-based implants in orthopedics—a general review and perspectives. *Adv Sci* 7(8):1902443

64. Razavi M, Fathi M, Savabi O, Tayebi L, Vashae D (2020) Biodegradable magnesium bone implants coated with a novel bioceramic nanocomposite. *Materials* 13(6):1315
65. Sun Y et al (2019) Translational status of biomedical Mg devices in China. *Bioact Mater* 4:358–365
66. Chen Y, Xu Z, Smith C, Sankar J (2014) Recent advances on the development of magnesium alloys for biodegradable implants. *Acta Biomater* 10(11):4561–4573
67. Jayalakshmi S, Sankaranarayanan S, Arvind Singh R, Shabadi R, Gupta M (2021) Utilizing iron as reinforcement to enhance ambient mechanical response and impression creep response of magnesium. *Metals* 11(10):1448



Sankaranarayanan Seetharaman wrote this article while working as a Research Fellow at the Department of Mechanical Engineering, National University of Singapore, Singapore. Currently, he is a Scientist at the Advanced Remanufacturing Technology

Centre (ARTC), Singapore. His research interests include advanced materials processing methods and process–structure–property relationships in metallic materials. He received his B.E. in mechanical engineering from Anna University, India (2007) and Ph.D. from the National University of Singapore (2014). He was also a visiting researcher at the Indian Institute of Science, Bangalore (2012), and Helmholtz Zentrum Geesthacht, Germany (2014). He is a professional member of The Minerals, Metals and Materials Society and actively contributes to the Light Metals Division. He has published over 70 research articles in various peer-reviewed journals and conference proceedings and his current h-index is 21.



S. Jayalakshmi is a Professor at the College of Mechanical and Electrical Engineering, Wenzhou University, Wenzhou, China. She received her doctoral degree from the Department of Mechanical Engineering, Indian Institute of Science (IISc), Bangalore,

India, in 2002. Prior to her current position, she was a Professor in Mechanical and Aerospace Engineering at India. She was a Research Fellow and Academic Visitor at the Department of Mechanical Engineering, National University of Singapore (NUS) and was a Scientist at the Advanced Materials Research Division, Korea Institute of Science and Technology (KIST), Seoul, South Korea. She has extensive research experience on processing, characterization, and structure–property relation of metallic materials including light metal alloys/composites, amorphous alloys/bulk metallic glasses and hydrogen interaction with metals. Her current research interests include magnesium alloys and nanocomposites, high entropy alloys, and additive manufacturing. She received the Best Master's Thesis Award at the national level, given by the Indian National Academy of Engineering (INAE). She was selected for the INAE Research Scheme in 2018 to conduct research on shock wave interaction with light metals at the Centre of Excellence in Hypersonics, Department of Aerospace Engineering, IISc. Her scientific contributions include 78 research articles (1 invited), 85 conference presentations (26 invited), 2 e-disclosures, 2 books, and 13 book chapters. She has 2 best paper awards to her credit.



R. Arvind Singh is a Professor at the College of Mechanical and Electrical Engineering, Wenzhou University, Wenzhou, China. He received his doctoral degree from the Department of Mechanical Engineering,

Indian Institute of Science (IISc), Bangalore, India in 2003. His expertise is in tribology and surface engineering related to aerospace, automotive, renewable energy, biomedical, and MEMS applications. He has extensive experience in both academic and corporate R&D environments. Prior to his current position, he was a Professor in Aerospace & Mechanical Engineering at India. He was a Senior Research Engineer at the Energy Research Institute (ERIAN) at the Nanyang Technological University (NTU), Singapore, Lead Engineer at Vestas Global R&D (Singapore), Research Fellow at the Department of Mechanical Engineering, National University of Singapore (NUS), Scientist at Korea Institute of Science and Technology (KIST), Seoul, South Korea, and Materials Scientist at the John. F. Welch Technology Center (GE India). He received the 'First Surface Engineering Best Paper Award' from the Society of Tribologists and Lubrication Engineers (STLE) USA for his pioneering work on biomimetic tribological solutions to micro/nano-scale devices. He was the recipient of 'Best Scientific Presentation Award' given by the Energy Research Institute (ERIAN), Singapore. He also received KSTLE Award by the Korean Society of Tribologists and Lubrication Engineers. His current research interests include light alloys/composites/nanocomposites, nanolubricants, high entropy alloys, and additive manufacturing of metals. His scientific contributions include 70 research articles (2 invited), 90 conference presentations (20 invited), 7 e-disclosures, 1 book, and 16 book chapters. He has 3 best paper awards and 3 highly cited papers to his credit.



Manoj Gupta was a former Head of Materials Division of the Mechanical Engineering Department and Director designate of Materials Science and Engineering Initiative at NUS, Singapore. He did his Ph.D. from University of California, Irvine, USA

(1992), and postdoctoral research at University of Alberta, Canada (1992). He is currently among top 0.6% researchers as per Stanford' List, among Top 1% Scientist of the World Position by The Universal Scientific Education and Research Network and among 2.5% among scientists as per ResearchGate. To his credit are: (i) Disintegrated Melt Deposition technique and (ii) Hybrid Microwave Sintering technique, an energy efficient solid-state processing method to synthesize alloys/micro/nano-composites. He has published over 600 peer-reviewed journal papers and owns two US patents and one Trade Secret. His current h-index is 72, RG index is 48.3 and citations are greater than 18,000. He has also co-authored eight books, published by John Wiley, Springer, and MRF—USA. He is Editor-in-Chief/Editor of 12 international peer-reviewed journals. As multiple award winner, he actively collaborates/visits Japan, France, Saudi Arabia, Qatar, China, USA, and India as a visiting researcher, professor, and chair professor.