

Journal of the
Indian Institute of Science
Volume 61 (A), 1979

INDEX

Indian Institute of Science
Bangalore 560 012

JOURNAL OF
THE INDIAN INSTITUTE OF SCIENCE

Volume 61, January-December 1979

SECTION A

Title Index

- A note on information retrieval experiment designed at Bangalore to establish an S.D.I. system with 5 subject profiles for using Belcom-1 system mini computer or a DEC 1090 system with DBS availability
T. K. S. IYENGAR AND K. K. NAMBIAR 67
- A note on the first order chromatic aberrations of a hyperchromatic lens
T. V. PARDHASARADHI 261
- Development of a structured program for conversion to prenex normal form
N. CHAKRAPANI, S. V. RANGASWAMY AND V. G. TIKEKAR 123
- Dielectric-lined rectangular metal waveguide
R. CHATTERJEE AND G. K. DEB 159
- Influence charts for rigid pavements for edge loads
A. SIVA REDDY AND B. N. PRADHAN 105
- Input impedance of spherical dielectric antenna excited in TM symmetric mode
A. K. BHATTACHARYYA 241
- Interfacial area for packed towers
M. S. MURTHY AND A. V. RAO 1
- Launching efficiency of overmoded dielectric rods excited in the HE_{1m} mode by a nonuniform magnetic ring source
JAYANTI VENKATARAMAN 79
- Microstrip antennas
R. CHATTERJEE AND N. S. GANESAN 271
- Non negative solution of linear equations
S. K. SEN 41
- Resonant frequencies of lossy dielectric spheres excited by delta function and magnetic sources
R. CHATTERJEE AND GLORY JOHN 21
- Stress distribution in a semi-infinite strip with loadings on the long edges
K. T. SUNDARA RAJA IYENGAR AND R. JEEVANANDAM 53
- Techniques of fabrication of Fresnel lenses
T. V. PARDHASARADHI AND M. RAMAKRISHNA RAO 253
- The dielectric-coated conducting sphere excited in the symmetric transverse magnetic mode—resonant characteristics
PARVEEN WAHID AND R. CHATTERJEE 227
- The dielectric-coated conducting spheremodal and near-field characteristics
PARVEEN WAHID AND R. CHATTERJEE 137
- The truncated dielectric-coated conducting sphere—radiation and gain characteristics
PARVEEN WAHID AND R. CHATTERJEE 207

Author Index

- BHATTACHARYYA, A. K.
Input impedance of spherical dielectric antenna excited in TM symmetric mode 241
- CHAKRAPANI, N., RANGASWAMY, S. V. AND TIKEKAR, V. G.
Development of a structured program for conversion to prenex normal form 123
- CHATTERJEE, R.
See Parveen Wahid and R. Chatterjee 137, 207, 227
- CHATTERJEE, R. AND DEB, G. K.
Dielectric lined rectangular metal waveguide 159
- CHATTERJEE, R. AND GANESAN, N. S.
Microstrip antennas 271
- CHATTERJEE, R. AND GLORY JOHN
Resonant frequencies of lossy dielectric spheres excited by delta function electric and magnetic sources 21
- DEB, G. K.
See Chatterjee, R. and Deb, G. K. 159
- GANESAN, N. S.
See Chatterjee, R. and Ganesan, N. S. 271
- GLORY JOHN
See Chatterjee R. and Glory John 21
- IYENGAR, T. K. S. AND NAMBIAR K. K.
A note on information retrieval experiment designed at Bangalore to establish an S.D.I. system with 5 subject profiles for using Belcom-1 system mini computer or a DEC 1090 system with DBS availability 67
- JAYANTI VENKATARAMAN
Launching efficiency of overmoded dielectric rods excited in the HE_{1m} mode by a nonuniform magnetic ring source 79
- JEEVANANDAM, R.
See Sundara Raja Iyengar, K. T. and Jeevanandam, R. 53
- MURTHY, M. S. AND RAO, A. V.
Interfacial area for packed towers 1
- NAMBIAR, K. K.
See Iyengar, T. K. S. and Nambiar, K. K. 67
- PARDHASARADHI, T. V.
A note on the first order chromatic aberrations of a hyperchromatic lens 261
- PARDHASARADHI, T. V. AND RAMAKRISHNA RAO, M.
Techniques of fabrication of Fresnel lenses 253
- PARVEEN WAHID AND CHATTERJEE, R.
The dielectric-coated conducting sphere excited in the symmetric transverse magnetic mode—resonant characteristics 227
- The dielectric-coated conducting sphere—Modal and near-field characteristics 137
- The truncated dielectric-coated conducting sphere—radiation and gain characteristics 207
- PRADHAN, B. N.
See Siva Reddy, A. and Pradhan, B. N. 105
- RAMAKRISHNA RAO, M.
See PARDHASARADHI, T. V. AND RAMAKRISHNA RAO, M. 253
- RANGASWAMY, S. V.
See Chakrapani, N., Rangaswamy, S. V. and Tikekar, V. G. 123
- RAO, A. V.
See Murthy, M. S. and Rao, A. V. 1
- SEN, S. K.
Nonnegative solution of linear equation 41

- SIVA REDDY, A. AND PRADHAN, B. N. Influence charts for rigid pavements for edge loads 105
- SUNDARA RAJA IYENGAR, K. T. AND JEEVANANDAM, R. Stress distribution in a semi-infinite strip with loadings on the long edges 53
- TIKEKAR, V. G. See Chakrapani, N., Rangaswamy, S. V. and Tikekar, V. G. 123

Key Word Index

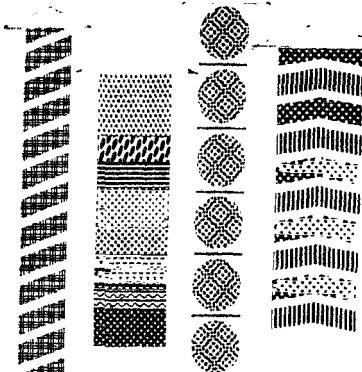
- | | | | |
|-------------------------------------|-----|------------------------------------|-----|
| Absorption | 1 | Mass transfer | 1 |
| Airports | 105 | Microstrip antennas | 271 |
| Amplitude constants | 21 | Modal analysis | 137 |
| Angular spectrum | 271 | Moments | 105 |
| Artificial basis technique | 41 | Nonnegative solution | 41 |
| Cemented doublet lenses | 261 | Non-numeric computation | 123 |
| Chromatic aberration | 261 | Nonuniform magnetic ring source | 79 |
| Complex resonance frequency | 227 | Normal loading on the long edges | 53 |
| Conical feed | 241 | Overmoded dielectric rods | 79 |
| Deflections | 105 | Packed columns | 1 |
| Delta functions | 21 | Packings | 1 |
| Dielectric-coated antennas | 207 | Pascal | 123 |
| Dielectric-coated metal resonator | 227 | Principle of images | 271 |
| Dielectric-coated prolate spheroids | 137 | Radiation Pattern | 271 |
| Dielectric-coated sphere | 137 | Radiation and gain characteristics | 207 |
| Edge loading | 105 | Resonant frequencies | 21 |
| Excitation | 137 | Rigid pavements | 105 |
| Fresnel lenses | 253 | Runways | 105 |
| Influence charts | 105 | Semi-infinite strip | 53 |
| Inhomogeneous waveguide | 159 | Simplex method | 41 |
| Input impedance | 241 | Solar energy concentrators | 253 |
| Interfacial area | 1 | Spherical dielectric antenna | 241 |
| Launching efficiency | 79 | Stepwise refinement | 123 |
| Linear programming | 41 | Stress analysis | 53 |
| Liquid hold-up | 1 | Structured programming | 123 |
| Lossy dielectric spheres | 21 | Thick cemented glass plates | 261 |
| LSE and LSM modes | 159 | TM symmetric mode | 241 |

Book Review Index

- Electronic devices and circuits—discrete and integrated by Y. N. Bapat, reviewed by B. S. Sonde 103
- Engineering mathematics Vol. I by R. S. L. Srivastava, reviewed by V. G. Tikekar 247
- Engineering mechanics, statics by P. Dayaratnam, reviewed by K. T. S. Iyengar 251
- Engineering properties of soils by S. K. Gulhati, reviewed by A. Siva Reddy 51
- Fortran IV computer programming by N. N. Biswas, reviewed by D. N. Seshadri 135
- Principles of foundry technology by P. L. Jain, reviewed by M. R. Seshadri 305
- Sun, weather and climate by John R. Herman and Richard A. Goldberg, reviewed by S. V. C. Aiya 205
- Television engineering by Arvind Dhake, reviewed by N. S. Nagaraja 249
- The new Penguin dictionary of electronics by Carol Young, reviewed by B. S. Sonde 204

State-of-the-art electronics in India-2

BEL has spearheaded Semiconductor technology in India



**Technological integrity
and Vertical Integration
to achieve high reliability**



BEL has been in the vanguard of technological progress in the manufacture of Germanium and Silicon semiconductors, which calls for a high degree of technological sophistication.

Vertical Integration ensures total control of the manufacturing process resulting in highly dependable products of uniform quality and reliability.

Yet semiconductors are just one facet of BEL's component capability.

The other well-known components that professionals stake the performance of their equipment on are Receiving Valves, Transmitting Tubes, X-ray Tubes, Cathode Ray Tubes, TV Picture Tubes, Microwave Tubes, Hybrid Microcircuits, Integrated Circuits, Passive Components and Printed Circuit Boards — just to name a few.

BEL's contribution in fact goes far beyond the mere supply of high quality, high reliability components.

It constitutes the pioneering work done in the design and manufacture of the widest range of components and equipment conforming to JSS, MIL, BSS and DEF standards employing the latest trends and state-of-the-art technology.

Yet BEL's most important contribution is the creation of total systems capability in electronics in India.

BEL—leaders in professional electronics



BNARAT ELECTRONICS LTD.

(A Government of India Enterprise)
Incorporated in India